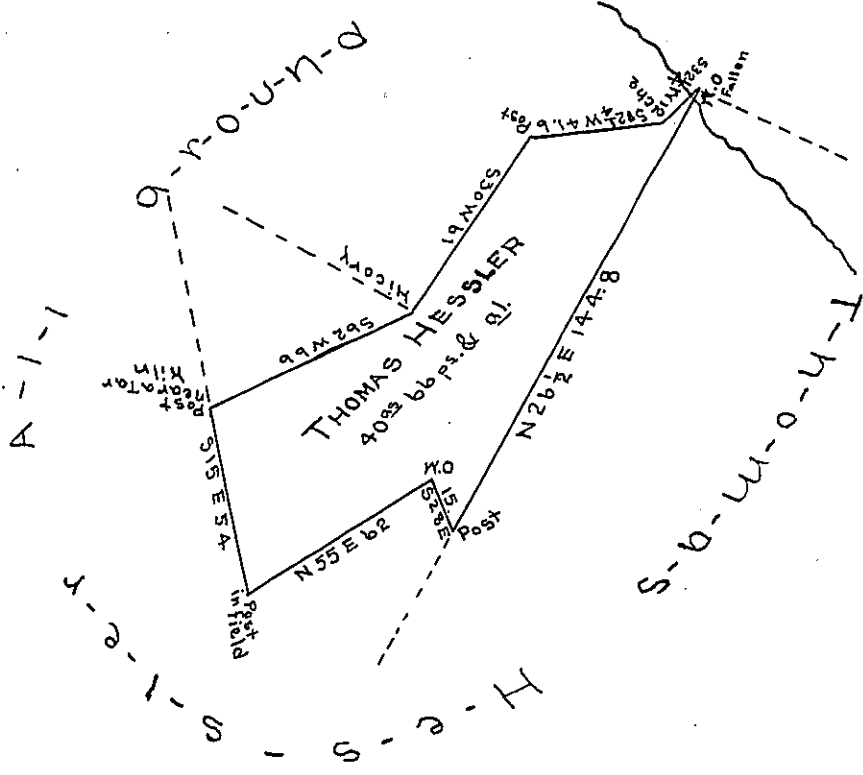


Course & Distance	N.	S.	E.	W.	M.D.
1 N26 1/2 E 144.8	129.5		64.6		20 80
2 S32 1/2 W 120		102		6.4	25 62
3 S82 1/2 W 41.6		5.6		41.2	21 96
4 S30 W 61		52.8		30.5	17 74
5 S62 W 66		31.0		58.2	14 63
6 S15 E 54		52.2		13.9	05 82
7 N55 E 62	32.5			50.8	01 21
8 S28 E 15		132		7.0	02 75
	165.0	1650	136.3	136.3	



North Area  
 26936.00  
 2790.30  
 27726.30  
 16025.98  
 13700.32  
 68501.6 (40 as.)  
 6784  
 66.1  
 40 1/2 66 1/4 25.

South Area  
 2115.24  
 1224.16  
 7756.32  
 1804.20  
 725.58  
 1800.48  
 16025.98

Situate in Belfast Township Fulton County Containing forty acres and sixty six perches with the usual allowance of six per cent for roads & Surveyed November 4<sup>th</sup> 1851 on Warrant granted to Thomas Hessler for forty acres dated 22<sup>d</sup> of October 1851.

To J. Porter Braxley Esq<sup>r</sup> S.G. And<sup>w</sup> J. Fore C.S.

N.B. The above tract has about ten acres of cleared land on it. been cleared twenty years or more - no House on said tract.

A.J. Fore C.S.

*IN TESTIMONY* that the above is a copy of the original remaining on file in the Department of Internal Affairs of Pennsylvania, made conformably to an Act of Assembly approved the 16th day of February, 1833, I have hereunto set my Hand and caused the Seal of said Department to be affixed at Harrisburg, this seventeenth day of April 1905

*James R. Brown*  
 Secretary of Internal Affairs.